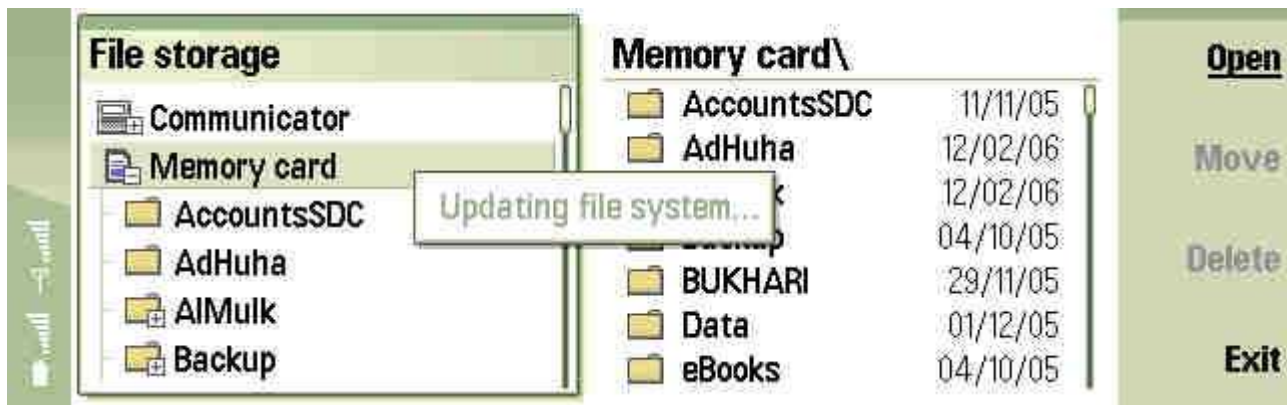


<http://www.i-symbian.com/forum/articles.php?action=viewarticle&artid=72>

Be a power user, use Best FileMan for Series 80

By Asri al-Baker

Series 80 has a built-in filemanager and to be frank, I'm not satisfied with it's performance especially the speed when changing folders and viewing folder contents. And that annoying message "Updating File System" is really irritating...



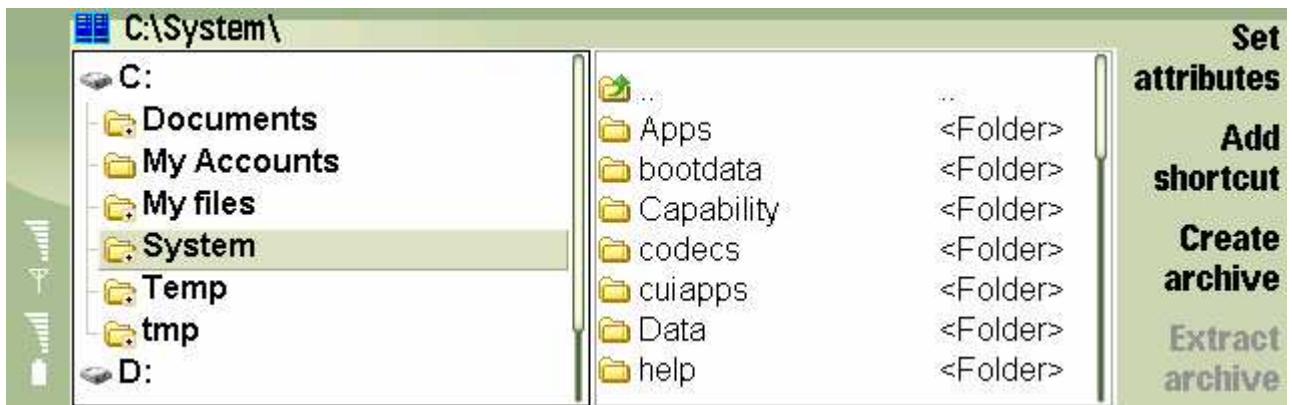
On the old Series 80 (9210, 9210i), there was a superb 3rd party filemanager called Redshift Commander but it is not ported to Series 80 version 2 (yet), leaving the gap opened for other developers to take advantage.



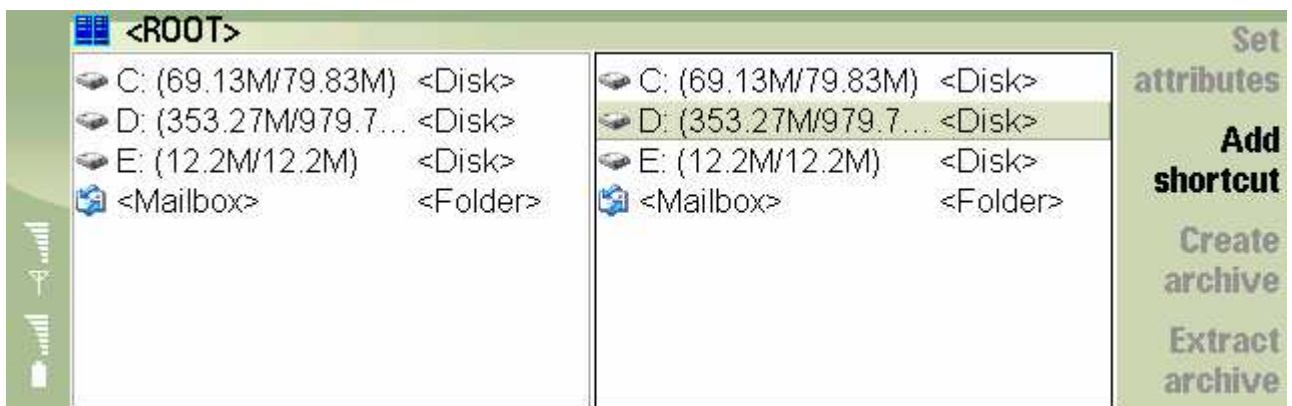
Enter **Best FileMan Series 80** (aka PowerFile), developed by SmartphoneWare (It was SymbianWare, now split into SmartphoneWare and Rock-Your-Mobile, Best FileMan Series 80 is maintained by SmartphoneWare). Is Best FileMan Series 80 really a powerful tool and does it live up to it's name? Let's have a look.

Explorer style and 2 panels

First of all, with Best FileMan Series 80, you can choose from 2 different types of views. The **Explorer style** and the **2 panels** view.



The **Explorer style** is reminiscent of Windows Explorer on your PC where the screen is divided into folders on one side and contents on the other side. Scrolling on the folder list will produce the contents list on the other parts of the screen. Personally, I don't like this option and thank god, it has another view to choose.



2 panels. This is my favourite and I set it to default. With this option, I can see the contents of 2 different places (drives / folders) at a glance. I found this to be very useful because it is easy to move or copy contents from one place to another. And the navigation is a breeze and very fast compared to the built-in filemanager.

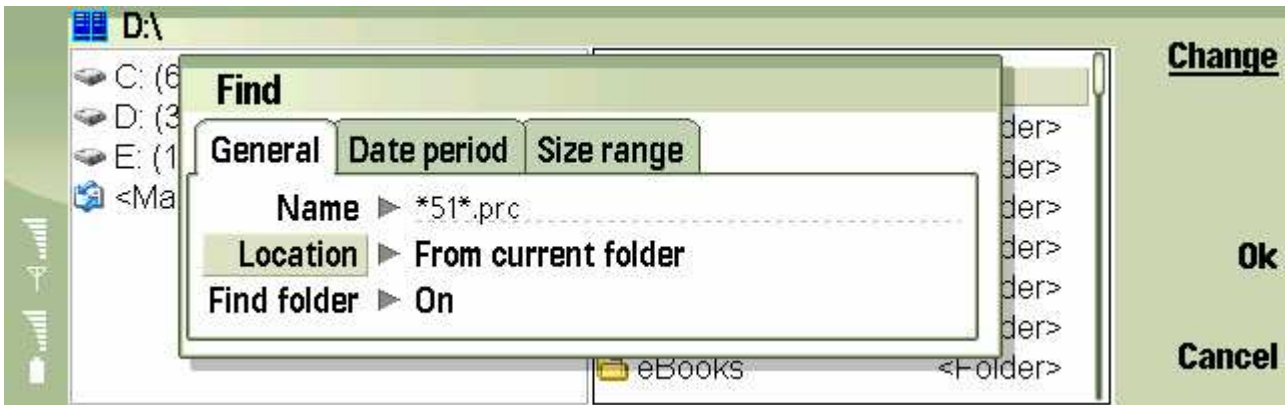
Speed

The most noticeable difference between Best FileMan Series 80 and the built-in filemanager is the speed. My salute to SymbianWare because they address this issue correctly. The speed can be felt when navigating folder contents as well as moving and copying contents.

Managing files and folders is very important because if you really put important stuff in your communicators, you need to know where they are. And accessing this information need to be done quickly. After frustrated with the built-in filemanager, I find Best FileMan Series 80 very useful especially to access important information in my database and documents.

Search

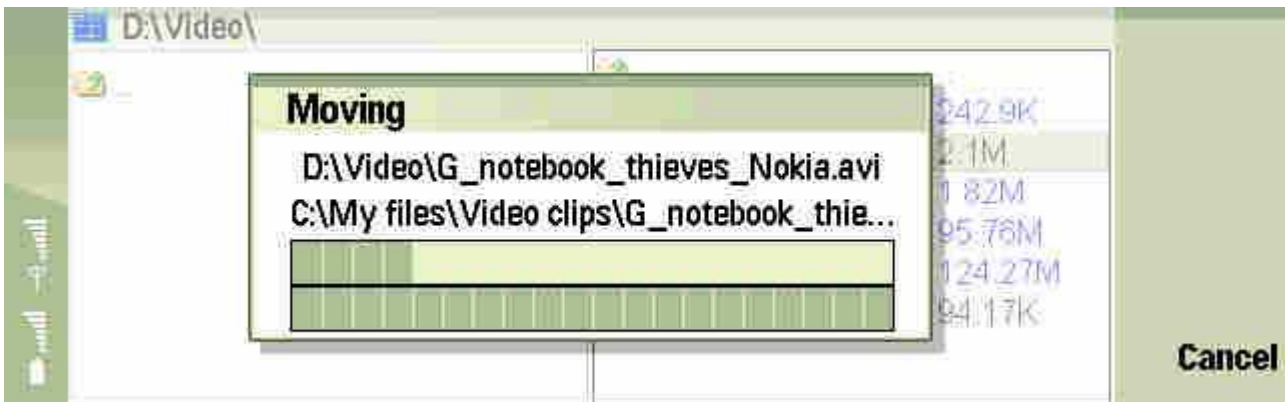
If you forget the whereabouts of your files, fret not, you can use the search function which can be invoked by pressing "**Ctrl + F**". The search function is very easy to use and accept wildcards in search strings.



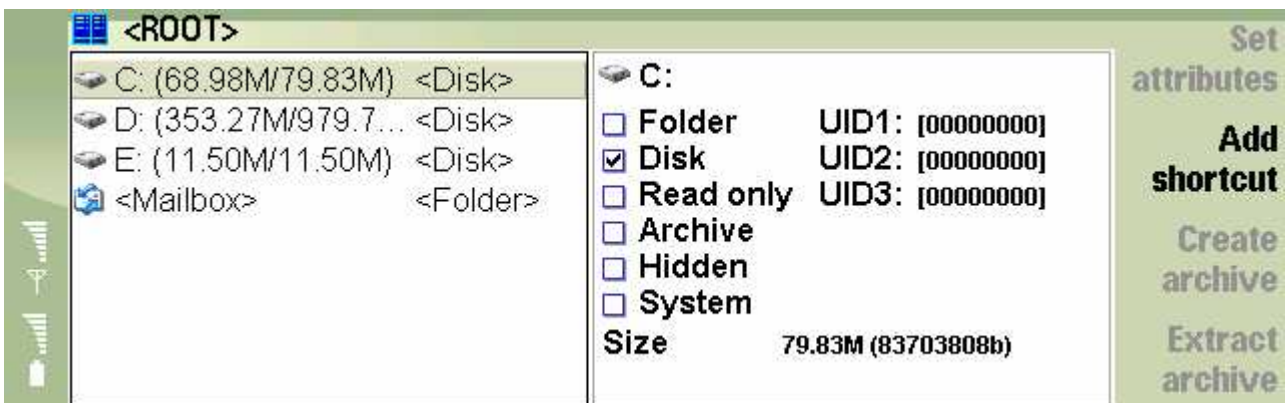
In the result screen, you can go to the folder where the file is located or directly launch the file. Pretty cool!

Some Important functions

When moving and copying stuff around, Best FileMan Series 80 shows an **indicator**, with the percentage of the process showed for our reference. For example, when moving file from **C:\My Files** to **D:\My Files**, the indicator shows the percentage of the file being moved. For me, this is a very cool feature because I know what is happening with the process. Highly useful especially when working with large files and folders.



Another cool feature is the **Information (Properties) dialogue** which tells user the property of a file, a folder or a drive. This is extremely useful for knowing the amount of memory and storage consumed by the system. It is also a quick way to see the property of a particular file or folder.

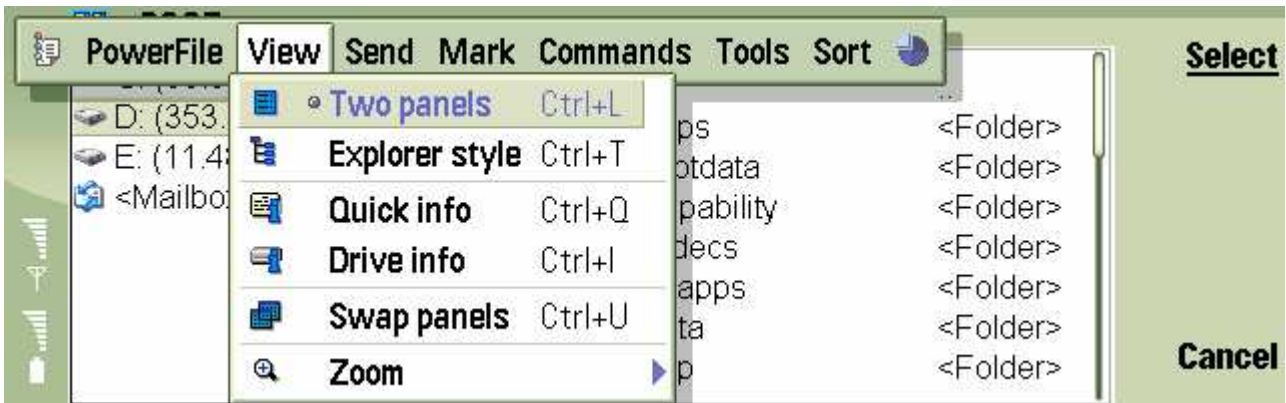


If you are a serious user, I bet by now you have already learned to use **keyboard short-**

cuts to ease navigation and perform functions in Series 80. With Best FileMan Series 80, these have been laid down beautifully. Standard Series 80 keyboard function can be used here like "**Ctrl + C**" for Copy, "**Ctrl + V**" for Paste etc.

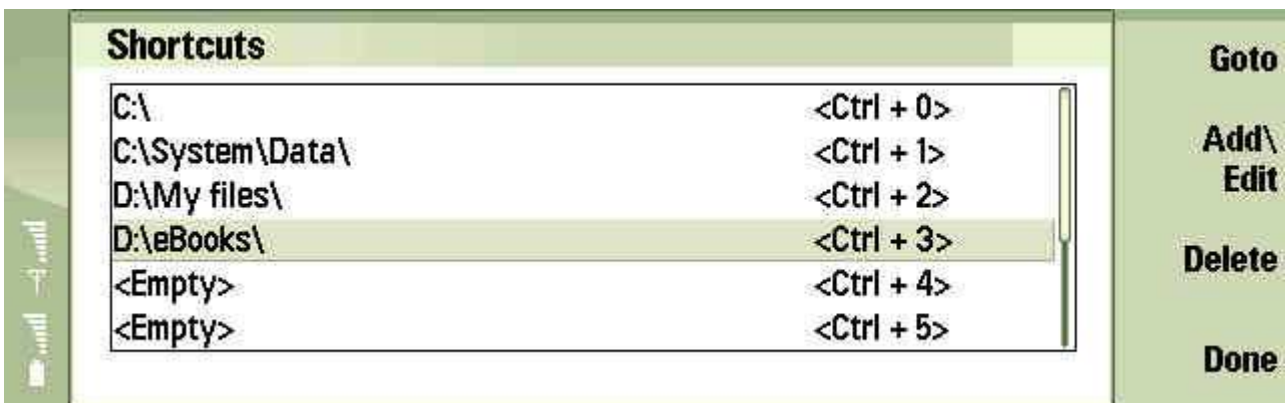
There are also other shortcuts specifically designed for Best FileMan Series 80 like "**Ctrl + Q**" for quick information which will show information of the selected files or folders.

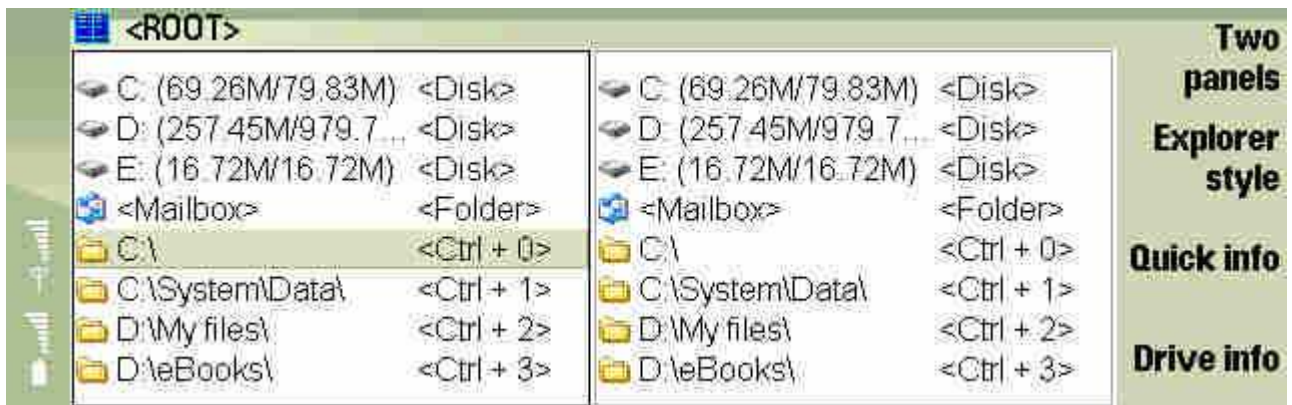
All shortcuts are beautifully laid down on the menu for easy learning. And SymbianWare did a good job with **small icons** on the menu. They look neat.



Folder Shortcuts

One of the most useful features in Best FileMan Series 80 that are not utilised by it's users is the **folder shortcut**. You can configure up to 10 quick shortcuts to your favourite folders. For example, you can set "**Ctrl + 1**" to go to the root in C (**C:**) and "**Ctrl + 2**" to go to the Data folder in internal phone memory (**C:\System\Data**) etc. And when you want to access these folders, just press the keyboard shortcut. These shortcuts are displayed on the main screen. It is a gem and everybobby should use it because it will speed your navigation. You dont need to dig into various folders to reach your destination.





Other utilities

Best FileMan Series 80 also has other cool stuff like **handling ZIP files**, opening files with different application than the default (**Open With**), **sorting views**, **beaming via infrared or bluetooth** and much more than the builtin filemanager.

Conclusion

Without doubt, Best FileMan Series 80 is the best filemanager for Symbian Series 80 because not only it is powerful, it also took advantage of the large screen and keyboard combination. While the built-in filemanager is very slow especially when working with large files, Best FileMan Series 80 handles all these with speed. We really recommend every 9300/9500/9300i users to install Best FileMan Series 80 and get used to it because you'll need it.

Get Best FileMan Series 80 from <http://www.smartphoneware.com>